

# DBM - Database Build and Management SETTING UP DATABASE AND MANAGEMENT TOOLS

*Science is built up of facts, as a house is built of stones; but an accumulation of facts is no more a science than a heap of stones is a house (Jules-Henri Poincaré).*

The purpose of the services offered in the DBM package is to provide the data with a structured form, thus enhancing their usability and sharing, which is simplified by some management tools that allow for a ready analysis.

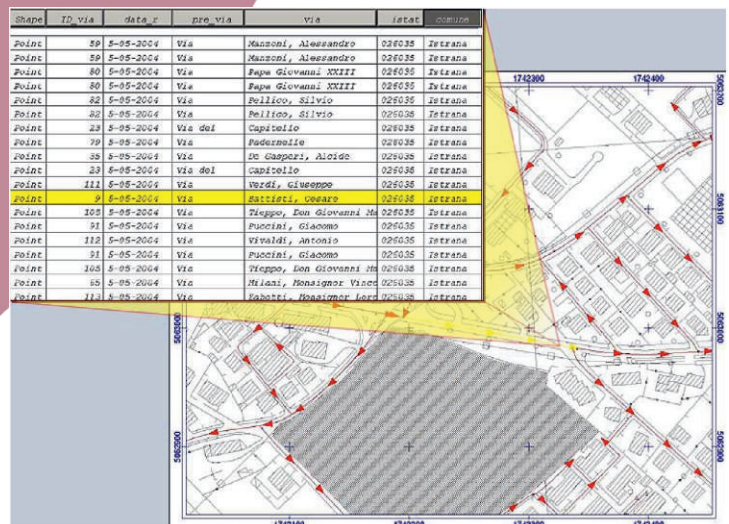
## Services provided:

- **Collection and reorganization of database already available** from official sources or existing at Territorial Local Authorities;
- **Data collection services “on the field”**, also through high-performance systems;
- **Correlation of information bases** and correlated themes, **construction of the uniformity of codes used**;
- Building of the support structure to the **geographical correlation of objects or of referenced events through LRS methods (Linear Referencing System)**, also based on different unit of measurement reference points. LRS methods coupling to a geographical location;
- **Relational database structure design** for data management, in relation to the objectives of the project and data entry. Can be used both **for commercial database or available with free licenses** (Oracle, PostgreSQL/Postgis, MSAccess,...);
- **Design of Information Systems**, i.e. set up of schemes, procedures and software for the collection, management and distribution of data;
- **Support for the choice of the most suitable tools**

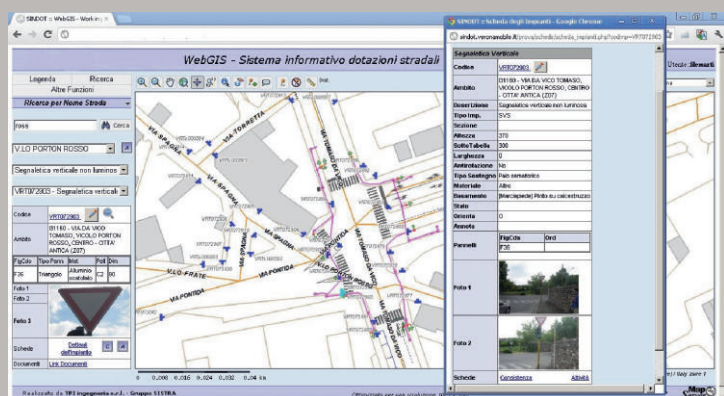
(commercial or open-source) for data processing, in relation to the objectives of the project.

## Products provided:

- **Feasibility and design studies of I.S.** with particular reference to the sectors of road condition, mobility, road and territory safety;



- **Thematic database** collected on the field or coming from the organization of existing data;
- **Tools accessible via web browser** for a quick data management, distribution, querying and even cartographic (**WebGis**).



## Related packages:

TMA - Traffic Monitoring and Analysis  
DBM - Database Build and Management  
RNM - Road Network Maintenance  
ESS- Easy Survey System

**TPI Ingegneria srl**

Civil Engineering, Transportation Engineering and I.T. Systems  
via XXXI Ottobre, 23 - 32032 Feltre (BL)

Tel/Fax: + 39 0439 190 1681 email: info@tpinet.it

