

Mod. BP01EN



TPI Ingegneria s.r.l.

Civil Engineering, Transportation Engineering and I.T. Systems

TPI Ingegneria s.r.l.

via XXXI Ottobre, 23 - 32032 Feltre (BL) - ITALY

tel/fax: +39 0439 190 1681

e-mail: info@tpinet.it

Web: www.tpinet.it





COMPANY PROFILE

TPI Engineering was founded in 2009 as the natural development of its members' experiences.

The company has built and consolidated continuous partnerships along with other professionals, companies and university departments with the goal of offering a complete and integrated range of services.

The scope of the activities developed directly by the company, is mainly related to the transportation engineering sector and the relevant applied I.T. Systems. Great attention is paid to the quality of the information, taking care of its organization, geographical representation and data management.

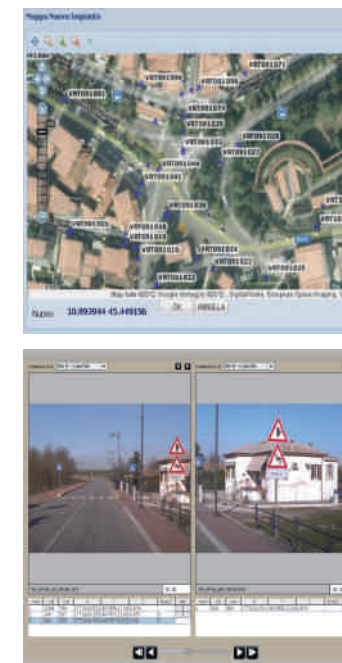
MOBILITY AND TRANSPORT PLANNING

Urban mobility and transport planning sector are supported through the provision of services for different levels of territorial analysis: regional spatial planning, or urban mobility and traffic plans. Relationships are defined between settlements and their effects on mobility, and between the vehicular load and its interference with urban dynamics.

On the local dimension, mobility impact assessments resulting from urban, residential, commercial or industrial activities are performed.

Scenario analyses are also carried out by modeling the expected structures and their potential effects.

In order to support planning activities traffic and mobility surveys such as manual or automated counts and direct user interviews (for public transport, private mobility or freight transport), are designed and implemented.



I.T. AND APPLICATION SOFTWARE

A recently developed area of activity is the implementation of information systems to manage and process all the data relating to the fields of mobility, of road infrastructure management and, more generally, territorial analysis.

The development of databases can be a part of more extended services, such as analyses and designing, or can be linked to initiatives already carried out by the customers.

The tools that are used include relational database management systems (Access, SQLServer, Oracle, PostgreSQL) and GIS software, both available on commerce (AutocadMap, ArcView, Arcmap, Geomedia) and open source (Kosmo, gvSig, QuantumGIS).

The company has also developed services through Web-based applications to ensure the best access to the available information and the a best scalability .

HARDWARE AND SOFTWARE TOOLS

- n. 3 Servers - n. 5 Personal Computers - n. 2 Notebooks
- n. 1 digital copier Develop Ineo + 224 – A3 colour double side printing
- n. 1 plotter HP 500
- n. 1 traffic counter for windings and pneumatic tubes model Marksman 660
- n. 2 Capitol model traffic counter induction hot plates
- n. 4 radar-based traffic counter equipment Viacount model
- n. 1 STRATO license – road design and territorial surveys management
- n. 1 AutocadMap license - n. 2 ZWCad licenses - n. 1 Progecad license
- n. 1 Geomedia license 5, n. 1 Arcview 3.2 license, n. 1 ArcMap 8.3 license
- n. 4 GIS with Kosmo, Qgis e gvSig software workstation
- Software for traffic flow simulation INRO EMM3
- Software or the micro simulation of traffic SIAS S-Paramics

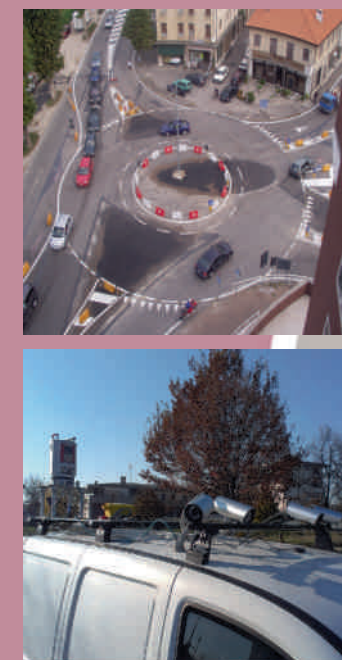


ROAD DESIGN

In the designing area, great emphasis is placed on urban design, which includes the creation of new road infrastructures or the adaptation of existing networks, in pursuit of goals like traffic safety (pedestrian and bicycle protection and traffic calming) and the functionality of road junction (roundabout intersections or traffic lights) and other road stretches.

Roundabouts are designed on the basis of the experiences drawn from several European countries and are supported by simulations on functionality which employ different experimental algorithms (Setra, Cetur, Bovy, etc).

Models on macro or micro scale have been developed for the estimation of the expected effects (speed, enqueues, time wasters) on both final interventions and on temporary construction sites with high vehicular flows.



OTHER SERVICES

Through our active partnerships, the company is capable to offer services and support in many additional areas. Based on the specific requests, dedicated working teams are set up in order to offer a coordinated service.

- Production of landscape reports;
- Architectural design and construction supervisor in civil, industrial and residential areas;
- Structural design;
- Hydraulic design and hydraulic compatibility studies;
- Studies and design in the energy sector;
- Geological and geotechnical surveys;
- Emergency procedures and evacuation planning, municipal and inter-municipal civil protection planning.